



**GLOBALLY TRUSTED
PREMIER TOXICOLOGY
GLP CONTRACT
RESEARCH ORGANIZATION**



**Biologics
Testing**



**General
Toxicology**



**Medical
Device
Testing**



**Genetic
Toxicology**



**Reproductive
Toxicology**



**In Vitro
Toxicology**



**Safety
Pharmacology**



**Carcinogenicity
Studies**



Ecotoxicology

30+ years of GLP

800+ Biocompatibility Tests

70+ Carcinogenicity Studies

90+ Investigational New Drug Applications

Strong R&D organization with **8** US Board Certified Toxicologists (**DABT**), **6** European Registered Toxicologists and **4** Board [Diplomate of Indian Board of Toxicopathology (**DIBTP**)] Certified Pathologists.

Exploratory Development Studies

- Mini Ames
- Mini hERG (hERG screening)
- Dose range finding studies
- Screening CVS function in telemetered dogs

Genetic Toxicology (GLP)**●● In Vitro Mutagenicity**

- Ames test
- Chromosomal aberration test
- Mammalian gene mutation test
- Micronucleus test

●● In Vivo Mutagenicity

- Micronucleus test
- Chromosomal aberration test

Safety Pharmacology

- hERG assay
- Pulmonary function (Rats)
- Modified Irwin test/Functional observation battery in rats (FOB-Rats)
- CVS function assessment using telemetered dogs

General Toxicology (Rodents & non-rodents)

- Single dose studies
- Repeated dose sub-acute and sub-chronic studies (7,14,28 & 90 days)
- Chronic toxicology studies (6,9 & 12 months)
- Combined chronic and carcinogenicity studies
- Carcinogenicity studies in rodents and transgenic mouse models

Development and Reproduction Toxicology

- Segment I - fertility studies
- Segment II - embryo-fetal studies
- Segment III - perinatal and postnatal studies
- Extended one-generation reproduction toxicity studies
- Juvenile toxicity studies

Immunotoxicology

- Immunotoxicity assay humoral response

- LLNA - skin sensitization

Neurotoxicology

- Neurohistopathology
- Extensive functional observation battery (FOB) tests

Ecotoxicology

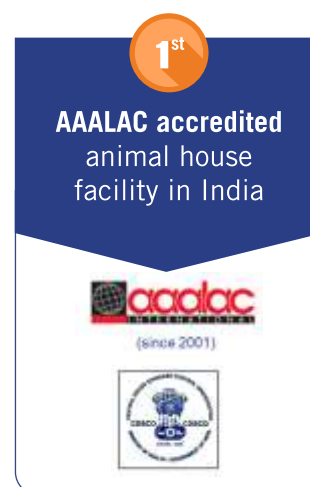
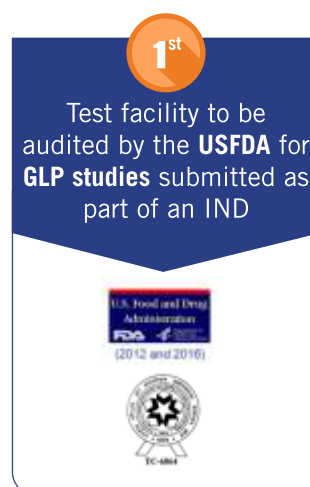
- Aquatic toxicology
- Avian toxicology
- Terrestrial toxicology
- Insect toxicology
- Bio-degradation
- Activated sludge

In Vitro Studies

- Episkin-skin irritation test
- Episkin- skin corrosion test
- In vitro skin sensitization
 - Direct peptide reactivity assay (DPRA)
 - KeratinoSens
 - Human cell line activation test (h-CLAT)
- EpiOcular
- The bovine corneal opacity and permeability

Medical Devices Testing (ISO 17025 & GLP)**We offer full scope of testing as per ISO 10993 regulatory guidelines**

- Cytotoxicity
- Genotoxicity test
- Hemocompatibility
- Sub/acute and chronic systemic toxicology studies
- Sensitization test
- Irritation test
- Systemic toxicity testing
- Ocular biocompatibility test
- Implantation test
- Cytotoxicity test of contact lenses



*In-life phase conducted at partner lab and contributory work at test facility(BA/TK/FA/HP)

Eurofins Advinus

#21&22 Phase II, Peenya Industrial Area, Bengaluru 560058, India